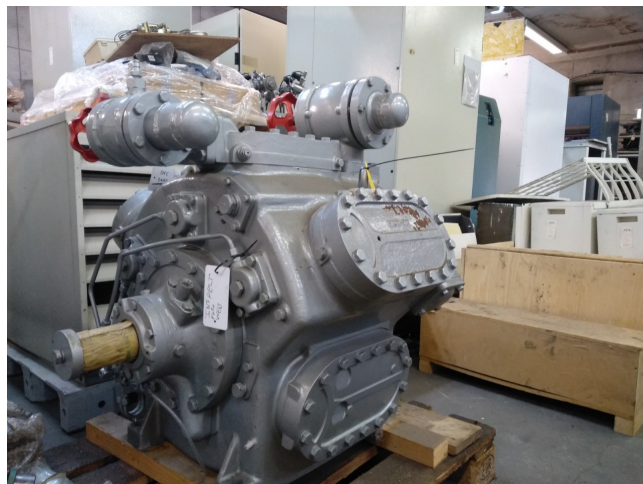


Sabroe SMC 106 S MK2

Specifications

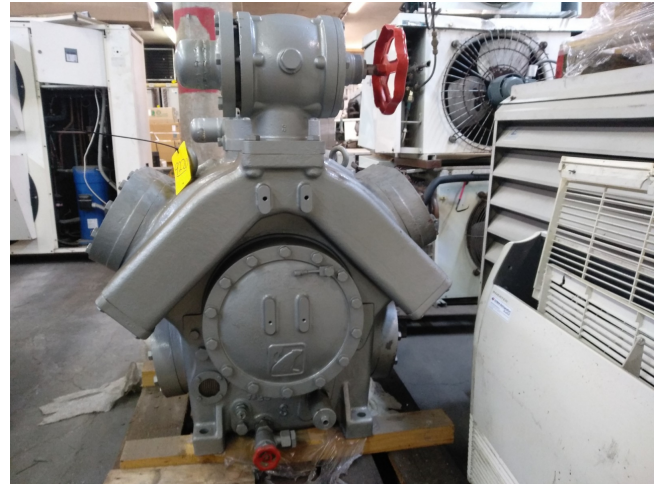
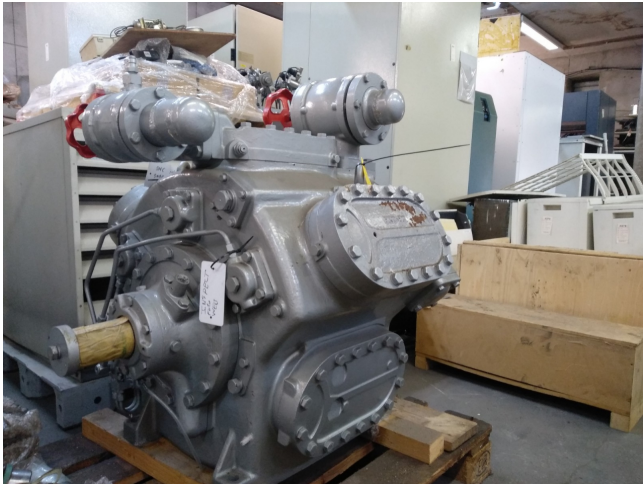
Marka	Sabroe
Typ	SMC 106 S MK2
Czynnik chłodzący	Freon
kW at 0°C/+40°C	293
kW at -5°C/+40°C	191
kW at -10°C/+40°C	53
Uwagi	capacity 191kW is based on -10°C/+35°C // capacity 53kW based on -40°C/-10°C and 1500 RPM see pdf
Uwagi	overhauled.
Stock	1



Description

Used Sabroe SMC 106 S MK2

Used JCI Sabroe SMC 106 S Ammonia NH3 reciprocating compressor. Our capacity table is based on ammonia NH3. For all the other specs, see the picture of the manufacturer model plate or the attached pdf file (if available). *Why choose for HOSBV? We're not only the largest used refrigeration specialist in Europe, but also, we deliver all equipment including an extensive test, warranty and industrial cleaning. *Optional we can also perform a new paint job and arrange the logistics.



Model	Number of cylinders	Swept volume at 1500 rpm m³/h	Swept volume at 3800 rpm m³/h	7072						Unit dimensions in mm			Weight excluding motor kg	Sound pressure level at 1500 rpm dB(A)	Sound pressure level at 3800 rpm dB(A)
				Nominal capacities in kW at 1500 rpm			Nominal capacities in kW at 3800 rpm								
				Single-stage	Single-stage	Booster	Single-stage	Single-stage	Booster	L	W	H			
				-10-30°C	0-40°C	-10-30°C	-10-30°C	0-40°C	-10-30°C						
SAC 104 S	4	226	271	127	195	35	153	235	42	2261-2865	1213	1229	1195	79	82
SAC 104 L	4	303	339	185	250	47	198	300	57	2361-2965	1213	1229	1215	80	83
SAC 104 E	4	339	N/A	203	286	59	N/A	N/A	N/A	2361-2965	1213	1229	1220	80	83
SAC 106 S	6	339	427	190	275	56	229	352	64	2286-2890	1267	1267	1267	81	85
SAC 106 L	6	424	509	247	375	71	267	400	85	2286-2890	1267	1267	1400	82	84
SAC 106 E	6	509	N/A	304	439	87	N/A	N/A	N/A	2286-2890	1267	1267	1400	82	84
SAC 108 S	8	452	543	255	391	71	306	469	85	2111-2515	1361	1267	1395	82	84
SAC 108 L	8	566	679	330	500	94	396	600	111	2111-2515	1361	1267	1630	83	85
SAC 108 E	8	679	N/A	406	612	116	N/A	N/A	N/A	2111-2515	1361	1267	1630	83	85
SAC 112 S	12	679	824	382	586	106	499	703	127	3279-3687	1475	1448	2205	83	85
SAC 112 L	12	848	1028	485	750	141	553	900	189	3279-3687	1475	1448	2280	83	86
SAC 112 E	12	1028	N/A	609	918	171	N/A	N/A	N/A	3279-3687	1475	1448	2300	83	86
SAC 116 S	16	905	1086	500	762	141	621	938	170	3329-3737	1536	1445	2505	84	86
SAC 116 L	16	1131	1387	689	1000	188	795	1200	226	3329-3737	1536	1445	2525	84	87
SAC 116 E	16	1357	N/A	812	1224	231	N/A	N/A	N/A	3329-3737	1536	1445	2590	84	87